

# Incremental Shaft Encoders Type PC 9/PC 9S

## Economy Types

## Panelcoders™



- Provides digital control inputs from operators's panel
- Bidirectional squarewave signal outputs
- Up to 512 increments
- Continuous and reversible rotation
- Non-contacting
- Operating temperature -40 ... 100 °C

### NUMBER OF PULSES

100 ... 512

### TECHNICAL DATA mechanical

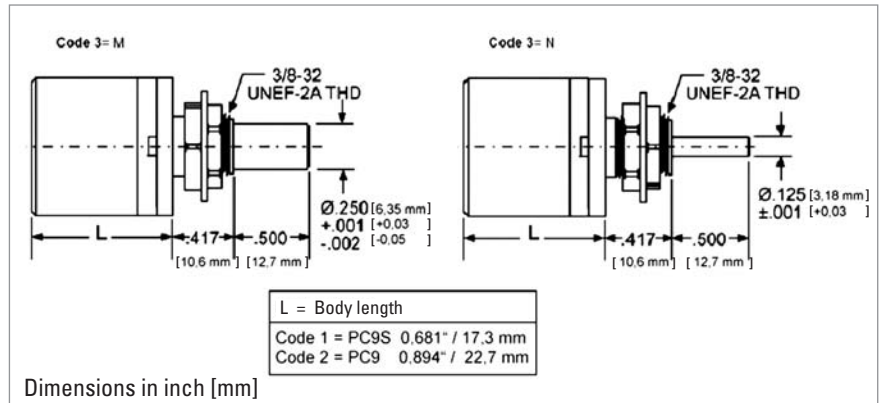
Shaft load	1/8" Shaft: 4 N axial, 27 N radial 1/4" Shaft: 4 N axial, 4 N radial
Moment of inertia	0.20 gcm <sup>2</sup>
Operating temperature	-40 ... +100 °C
Storage temperature	-50 ... +125 °C
Relative humidity	90 %, non-condensing
Connection	PC9: 10 pole header PC9S: 5 pole header
Recommended mating connectors	PC9: Thomas & Betts, part number 622-1030 (on request) PC9S: AMP, part number 103675-4 (on request)

### TECHNICAL DATA electrical

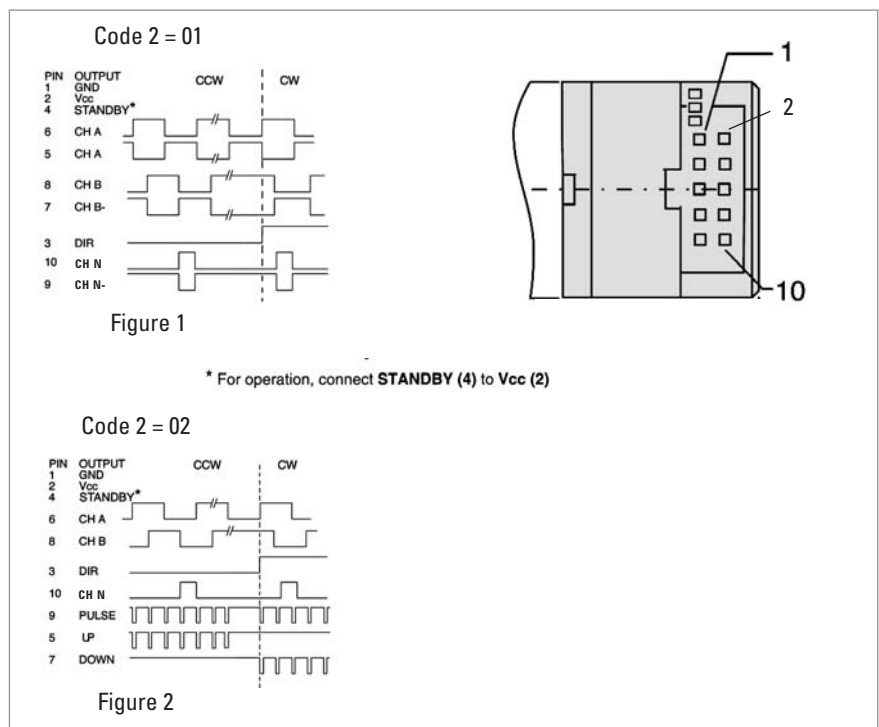
Code	Incremental, optical
Phasing	90° ±18° electrical
Symmetry	180° ±18° electrical
Index pulse width	90° ±36° electrical
Supply voltage	DC 5 V ±10 %
Supply current	10 mA, typical
Standby current	max. 50 µA (PC9 only)
Output signals	min. 2.5 V high (V <sub>OH</sub> ) max. 0.5 V low (V <sub>OL</sub> )
Output current	PC9: 3 mA sink/source (25 °C), 2 mA (100 °C) PC9S: 6 mA sink/source (25 °C), 4 mA (100 °C)
Max. output frequency	200 kHz

# Incremental Shaft Encoders Type PC 9/PC 9S Economy Types Panelcoders™

## DIMENSIONAL DRAWINGS



## OUTPUT WAVEFORMS CONNECTIONS PC9



## ACCESSORIES PC9

	ordering code
10 pole header, 30 cm ribbon cable with connector	CA 0 040 012

## ORDERING INFORMATION PC9

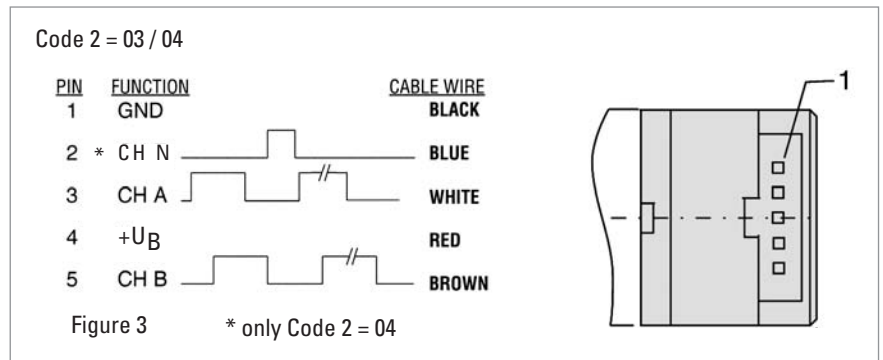
Type	Number of pulses	Code 2: Output	Mounting
<input type="checkbox"/>	<input type="checkbox"/>	<input type="checkbox"/>	<input type="checkbox"/>
PC9	0100	01 see figure 1	M 1/4" Shaft, sleeve bearing
	0144	02 see figure 2	N 1/8" Shaft, ball bearings
	0200		
	0256		
	0300		
	0360		
	0500		
0512			

# Incremental Shaft Encoders Type PC 9/PC 9S

## Economy Types

## Panelcoders™

### OUTPUT WAVEFORMS □ CONNECTIONS PC9S



### ACCESSORIES PC9S

5 pole header, 30 cm cable with connector	ordering code CA 0 050 012
---	-------------------------------

### ORDERING INFORMATION PC9S

Type	Number of pulses	Code 2: Output	Mounting
□	□	□	□
<b>PC9S</b>	<b>0 100</b> <b>0 144</b> <b>0 200</b> <b>0 256</b> <b>0 300</b> <b>0 360</b> <b>0 500</b> <b>0 512</b>	<b>03</b> see figure 3 (no index) <b>04</b> see figure 3	<b>M</b> 1/4" Shaft, sleeve bearing <b>N</b> 1/8" Shaft, ball bearings